



[Main Page](#)

[Utilities](#)

[Passwords](#)

[Visual Basic](#)

[Visual C++](#)

[Components](#)

[.NET Tools](#)

[Articles](#)

[FAQ](#)

[TOP 10](#)

[Links](#)

[Awards](#)

[Search](#)

[Pad Files](#)

[Contact](#)



**Netscapass v2.03**

**Copyright (c) 2000 - 2002 Nir Sofer**

## Description

When you configure Netscape Communicator 4.x or Netscape 6.x/7.x to automatically remember your mail password, the password is stored on your machine, and you don't need to type the password every time that you want to check your email. However, if you forget your password, Netscape doesn't allow you to recover the password. Netscape 6.x/7.x also allows you to save the passwords of web-sites, and automatically use them when they're needed, but the same problem exists also with web-sites passwords: You can't recover the passwords if they're lost...

This utility can reveal the stored mail password (POP3 server password) for Netscape Communicator 4.x, Netscape 6.x and Netscape 7. It can also reveal the stored web-sites passwords in Netscape 6.x and Netscape 7.

## Known Limitations

- In Netscape 6.x/7.x: The passwords couldn't be recovered if they were encrypted with a password by using the password manager.
- In Netscape 6.x/7.x installed on Windows NT/2000/XP: The utility can show only the passwords of the current logged on user.
- In Netscape 4.x: Netscape Versions 4.5 and above, saves the profiles information in a special file named "nsreg.dat", instead of using the Registry as in earlier versions. If Netscapass is unable to find your passwords, use the "Manually select profile folder" option, and select the profile folder manually.

## License

This utility is released as freeware. You can freely use and distribute it. If you distribute this utility, you must include all files in the distribution package including the readme.txt, without any modification !

## Disclaimer

The software is provided "AS IS" without any warranty, either expressed or implied, including, but not limited to, the implied warranties of merchantability and fitness for a particular purpose. The author will not be liable for any special, incidental, consequential or indirect damages due to loss of data or any other reason.

## Using Netscapass

Netscapass utility doesn't require any installation process. Just copy the executable (Netscapass.exe) to any folder you want, and run

it. After you run this utility, you can click the "Netscape 4.x Passwords" button in order to get the list of all user profiles and their password. If you click the "Netscape 6.x/7.x Passwords" button, you'll get the list of all stored passwords including both mail passwords and web-sites passwords.

Notice that the user and password details will be revealed only if they are stored on your machine and only if they are not encrypted with password manager.

After you get the passwords list, you can use the "Copy To Clipboard" button to copy the passwords list and paste it to another application like Notepad or Microsoft Word.

**Notice:** If you don't get the passwords you expected to find, or you get an error message telling you that Netscapass is unable to find the password file, you should try to manually select your Netscape profile folder by selecting the "Manually select profile folder" check-box. (See below).

## Problems in Netscapass

Netscape has released a wide variety of Netscape Navigator/Communicator versions (Especially in Netscape 4.xx ). Each version allows you to create one or more user profiles. The profiles information is saved on your computer, but unfortunately, Not all versions use the same way to store the profiles information. Some versions of Netscape use the Registry to save the profiles information, other versions save the profiles information in a special file (registry.dat or nsreg.dat), and the structure of this file is even changed from one version to another. Moreover, the profiles information file is saved on different folders, depending on the operating system you use.

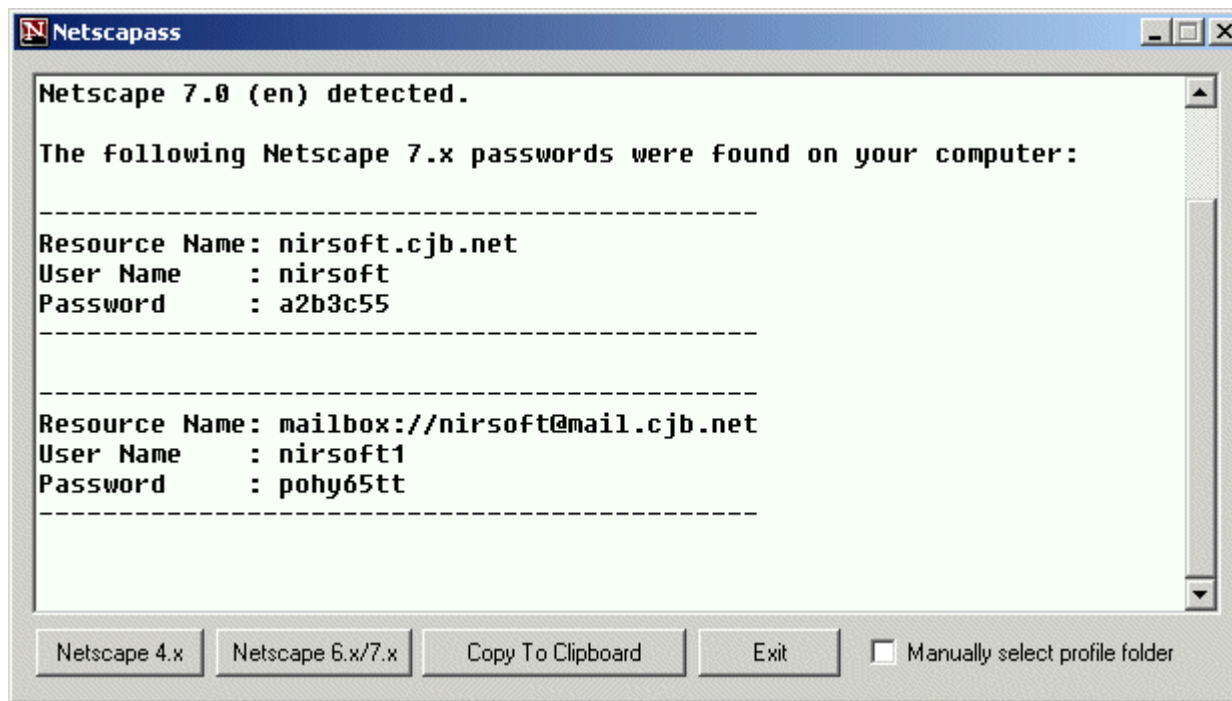
Unfortunately, I cannot test my software with the entire combinations of Netscape versions and operating systems.

Some people sent me a bug report about Netscapass, telling me that it was unable to find their passwords. These bugs were probably occurred because Netscapass was unable to correctly locate the profile folders.

In order to allow you to recover Netscape passwords in all cases, I added the following workaround to this problem:

If the Netscapass utility is unable to find your passwords automatically, follow the instructions below:

- select the "Manually select profile folder" option.
- click the "Netscape 4.x" or "Netscape 6.x/7.x" buttons. (according to your needs)
- Select the folder of your Netscape profile. The passwords of the selected profile folder will be revealed.



## Feedback

If you have any problem, suggestion, comment, or you found a bug in my utility, you can send a message to [nirsofer@yahoo.com](mailto:nirsofer@yahoo.com)

[Download Netscapass v2.03 \(26KB\)](#)